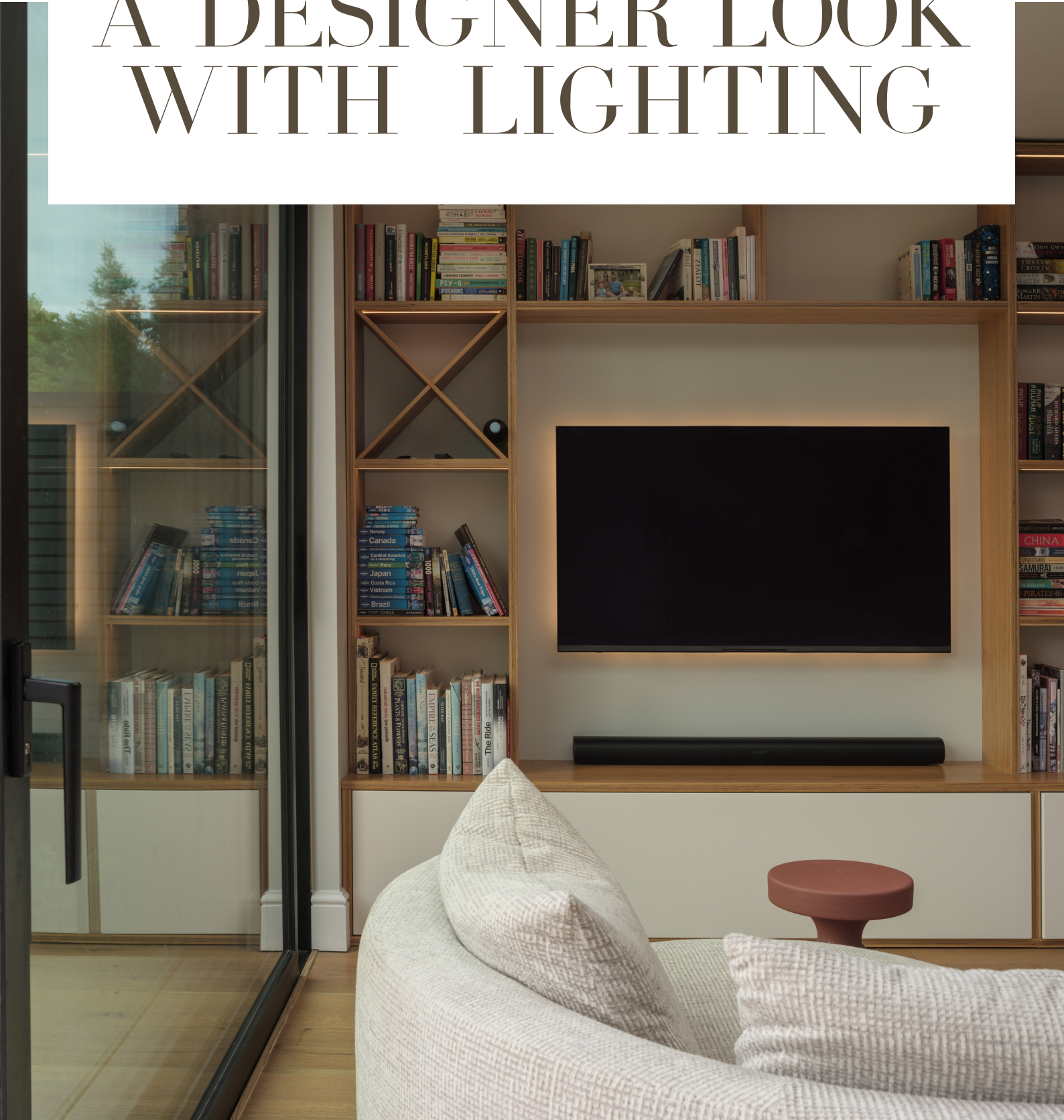


HOW TO CREATE A DESIGNER LOOK WITH LIGHTING



KATIE MALIK

DESIGN STUDIO



TABLE OF CONTENTS

- 01 **Welcome**
- 02 **About us**
- 03 **Meet Katie**
- 04 **Better lighting = better living**
- 05 **Task Lighting**
- 06 **Joinery Lighting**
- 07 **Kitchen Lighting**



TABLE OF CONTENTS

- 08 Lighting Artwork
- 09 Wardrobe Lighting
- 10 Resources-videos
- 11 Next Steps

WELCOME!

Welcome to Katie Malik Design Studio. We strongly believe that details make perfection. What does this perfection mean to you? At KMDS, we work closely with our clients to understand their vision, so we could design the space that would precisely reflect their tastes and lifestyle. Bespoke joinery and furniture, leading-edge technology and equipment - we consider all the features that will meet your practical needs and create a unique ambiance. The KMDS team is passionate about excellence and quality, while creating the designs for our private clients or prestigious property developers.

About this Guide

Lighting is probably the most overlooked home design aspect. Even modern builds seem oblivious to the importance of lighting design. We see many new developments with very poor lighting layouts, usually too many evenly spread down lights in the open plan spaces and one or two, depending on the size of the bedrooms, ceiling lights...if you're lucky you will get some wall lights in bedrooms, but this is quite rare.

Whether you just moved into a new built or are renovating. I very much hope you will find this guide on how to improve and create a designer look with lighting very 'illuminating'.

A handwritten signature in black ink that reads "Katie Malik". The signature is written in a cursive, flowing style with a mix of uppercase and lowercase letters.

ABOUT US

We are a team of experienced interior designers and a CGI specialist who creates beautiful 3D visuals for our clients that help us communicate our vision. For us, every project, every client is unique and bringing authenticity to each project is our goal.

The studio creates luxurious, personalised and intelligent residences, and strives to deliver exceptionally tailor-fit services – values that are at the very heart of our business. We take a holistic view of the connection between you and your space to create the best design solutions that would be a perfect fit. Principally residential experts, private client projects include homes and penthouse apartments, in super-prime London locations such as Mayfair as well as extensive country estates. At Katie Malik Design Studio we are proud to say that most of our sourcing is done in the UK and by high-qualified specialist artisans and UK suppliers.

Katie Malik Design Studio is proudly a British Institute of Interior Design (BIID) and Society of British and International Interior Design (SBID) accredited studio.

Our projects have been extensively featured in some of the top Interior design publications (AD Spain, Casa Vogue Brazil, House & Garden SA, Grand Designs UK, Ideal Home, Living Etc.) and awarded by UK's & International leading and most prestigious annual awarding bodies.

OUR AWARDS & ACCREDITATIONS

SYMBOL OF EXCELLENCE

LUX 2018 Leading Designers Awards
Best for Bespoke Interior Design Services
+ Cambridgeshire
Katie Malik Interiors

TOP 100
ARCHITECTS & DESIGNERS
OF THE WORLD
WINNER
★ 2022 ★

SBID
INTERNATIONAL
DESIGN
AWARDS
2020
FINALIST

**UNITED KINGDOM
PROPERTY
AWARDS**
AWARD WINNER
2020-2021

**UNITED KINGDOM
PROPERTY
AWARDS**
AWARD WINNER
2019-2020

**UNITED KINGDOM
PROPERTY
AWARDS**
AWARD WINNER
2018-2019
SALICE

British Institute of Interior Design
REGISTERED
INTERIOR
DESIGNER®
COLLECTIVE MARK

SBID
ACCREDITED
DESIGNER

MEET KATIE

Hi, I'm Katie, the founder and creative director of Katie Malik Design Studio.

Before I trained in Interior Design at Chelsea College of Art in London, I was a lecturer and helped others with their English so they could start their academic careers at British Universities. Prior to founding Katie Malik Design Studio, I worked at 1508 London and Fenton Whelan that specialise in luxury interior design for private clients and create exceptional spaces worldwide. Initially, it was just me, and now I am proud to say we have a great team of interior designers and a CGI specialist who creates beautiful 3D visuals for our clients that help us communicate our vision.

For us, every project, every client is unique and we love bringing authenticity to each project. We're not afraid of experimenting with colour, texture and scale. 🎨👷

We put our clients and their well-being first. We work efficiently and with passion to bring creative solutions to our clients' spaces. ❤️



Katie Malik

Creative Director &
Founder

We're very proud of all our achievements which prove we work to the highest industry standards. We've won LUX and UK Property Awards (3 times!), we have been featured in various industry publications. ★

On our [Instagram](#) we love sharing what we do with the hope to educate and inspire homeowners and developers.

BETTER LIGHTING= BETTER LIVING

In the realm of home design, lighting is often an overlooked aspect, even in the most modern builds. Frequently, we encounter new developments with subpar lighting layouts, featuring an excessive number of uniformly dispersed downlights in open-plan spaces and just one ceiling light in bedrooms. But fret not, even if you're faced with less-than-ideal lighting arrangements, there are solutions that can transform your living space into a designer haven. Whether you're renovating your home or residing in a new build, lighting can be the key to an aesthetically pleasing and functionally superior environment.

Statistics show that a well-illuminated room can make it appear more spacious and inviting. According to a survey by the American Lighting Association, 76% of homeowners believe that lighting can significantly impact the mood and ambiance of a room.

Hiring an interior or a lighting designer to create a lighting plan tailored to your space can yield exceptional results. This approach ensures the perfect illumination and a variety of lighting options that complement your new layout, transforming your space into a haven of style and functionality; however, you can also make small changes that will create a big impact on your own with the help of this guide.

Incorporating different types of lighting into your home design is not only an aesthetically pleasing choice but also a smart and energy-efficient one. So, whether you're renovating or living in a new build, lighting solutions I'm going to share with you can enhance your space's style, ambiance, and functionality. Don't underestimate the transformative power of well-planned lighting. It's the key to creating a designer look that caters to the needs and tastes of busy professionals like you.

TASK LIGHTING

Task Lighting forms the basis of most lighting standards, These sometimes suggest lighting direction for different kinds of task, but most standards are focused on the quantity of light needed. As ever, good lighting requires much more than simply complying with the relevant standards.

Whatever the activity, we should imagine ourselves in the position of the users so that we can visualise exactly what they require.

Exercise:

Imagine what tasks you perform in a room of your choice; now think what tasks you perform; make a list here:

1) _____

2) _____

3) _____

Can you now think whether you have enough light for each task?

YES

NO

I COULD DO WITH MORE

Do this for each activity- that way you will know whether more lighting is required or not.

We need to ensure that the lighting we use/design does nothing to hinder the task at hand. This could include designing out glare from reflective surfaces or visible light sources; it could also be as basic as ensuring that users do not cast shadows on the object they are trying to examine or use.

The task lighting is often seen to be the light required for the immediate activity or reading, typing or operating an appliance, however, there's much more to consider (we won't go into too much detail here).

Think of this, if you're working at a detailed task, you don't exist in an isolated bubble, and you have to consider the whole lit environment as contributing to the task light. A high level of light on a book does not help the reader to concentrate if the surrounding space seems dark, right?

Remember that good task lighting creates a good combination of intensity and direction that suits a particular activity, and in many instances allowing some personal control, such as dimming, provides the best user experience.

In a more traditional approach, you start the lighting design upwards, i.e. from the basic minimum standards of ambient lighting and applying any feature lighting on top. The alternative, especially, if you are renovating, is to start with the feature lighting and user-controlled task lights, building the visual hierarchy and adding ambient light only where it is needed. In this way, the feature lighting is an integral component of a holistic scheme, rather than an add-on that is likely to be lost in the cost-saving exercise.

Whatever way you choose, which will depend largely on your current situation, on whether you're renovating or not, you can still improve your lighting scheme and create a designer look.

Let's examine how you can add lighting into your home cleverly to create a designer look- we won't cover every single space in this guide, but we will focus on the areas that can have the most impact on your daily life and your home.

INCORPORATING JOINERY LIGHTING

K

As the saying goes: "The devil is in the detail".

Joinery lighting is lighting integrated into furniture or other built-in elements in a space. This integration allows one to bring the light closer to the target. Joinery lighting is most commonly used in shelves where objects like books, art are illuminated. Shelves can have, in effect, the same lighting treatment as spaces. We can introduce coves, slots, linear and even spotlights. With joinery lighting, you can add new layers to the room, highlighting different levels and elements.



Here, we used concealed LED lighting tape to highlight both the shelves and the flooring.

Design by [Katie Malik Design Studio](#)

Joinery by [Chardome](#)

INCORPORATING JOINERY LIGHTING

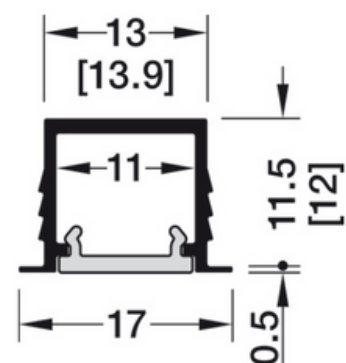
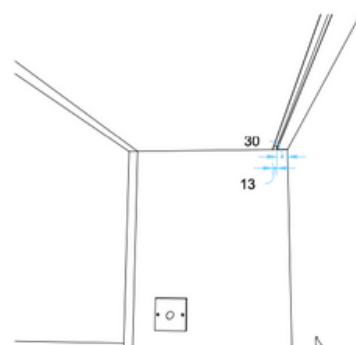
According to the U.S. Department of Energy, LED lighting can be up to 80% more energy-efficient than traditional incandescent lighting.

So what's the solution? Concealing LED tape in channels routed within your joinery can instantly elevate the room's design. Selecting the right LED color temperature and positioning them to highlight specific elements is crucial. The color and location of LEDs within the channels depend on what you intend to showcase. For example, horizontal placement is ideal for fixed shelving, with LEDs positioned about 20 mm from the front or 20mm from the back. For adjustable shelving, we would recommend vertical placement of the LEDs, at the same distance from the front. Let's have a look at a few examples from our past projects.



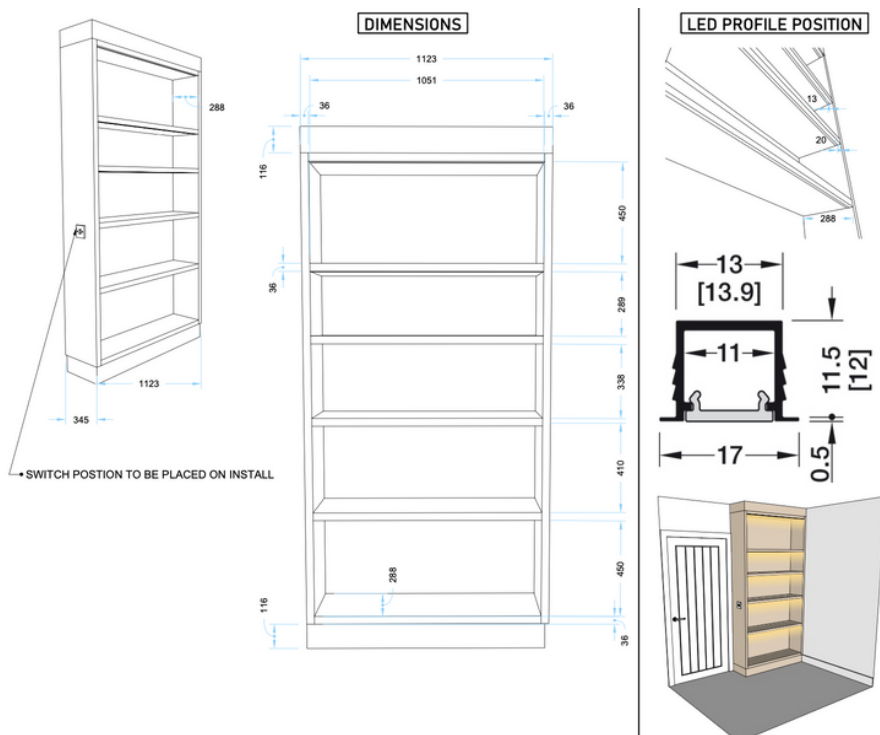
Above: Visual
Left: completed joinery

Notice that we still included the table lamp to help achieve the balanced lighting scheme.



INCORPORATING JOINERY LIGHTING

For this newbuild, we proposed a simple bookcase with fixed shelves and a side dimmer that allows for a smooth lighting control.

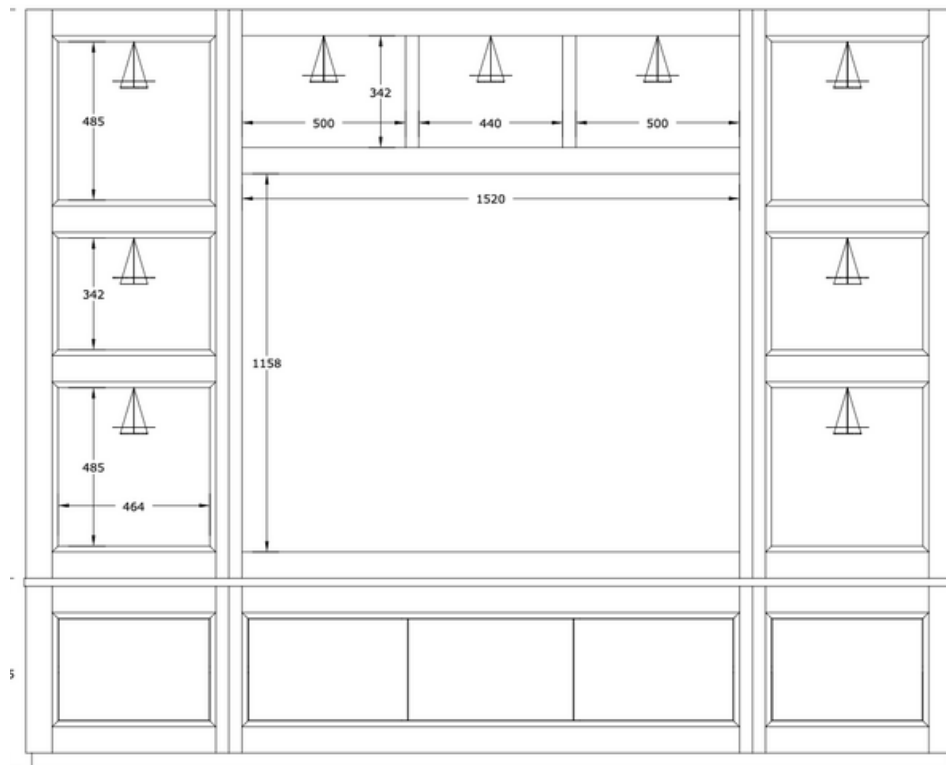


Design by [Katie Malik Design Studio](#)

Joinery by [TWB](#)

INCORPORATING JOINERY LIGHTING

LED Tape lighting is not the only solution for joinery lighting. Sometimes, it's more appropriate to use downlights. Miniature spotlights can be used to create focused pools of light onto specific objects as part of your shelf lighting scheme. This works to good effect when the shelves are divided into small sections with a single feature in each.



INCORPORATING JOINERY LIGHTING

K

If you are on a tight budget, you can still achieve the desired designer look with chargeable or battery operated LED lights that can be simply attached to the existing or new shelves or cabinetry. In the project below, to meet the clients' budget and minimise electrical works we proposed to conceal battery operated LED strips in the bespoke shelves suspended on the eaves.



INCORPORATING JOINERY LIGHTING

K

If you don't want to incorporate any LED tape or downlights into your joinery, you also have an option of adding a table lamp. In this Penthouse in Chelsea project, we added it in addition to the LED strips in the shelves.



The simplest option is to front light your shelves with an LED strip. This requires a simple down stand on the shelf or creative an appropriate size cove. Sometimes you can use bare LED tape, however using an aluminium profile with an opal cover will prevent any dotting effect and is usually the best solution. The choice depends on the detail and finishing of the shelf. This solution provides a very even light from the front suitable for most objects.

INCORPORATING JOINERY LIGHTING

Here's more inspiration for you on how to use front shelves lighting in the joinery. Think of shelves as a window in the room or even like a wall light. You don't have to use the lighting on each shelf- sometimes using it sporadically but intentionally, will create a more interesting, 'designer' effect.



Above: Bespoke Office Joinery for a New Built in Cambridgeshire.

Below, bespoke Library shelves for a country home in conjunction with Jeff Kahane.



INCORPORATING JOINERY LIGHTING

K



Above: Bespoke Shelves with Lighting for Its So Travel

Below, a visual of a Living Room (Part of a Georgian Listed Property Renovation)



INCORPORATING JOINERY LIGHTING

K



Above: Joinery Project in conjunction with [Cocoon Architecture](#)

Below, visuals of the joinery for a townhouse in Cambridge by us.



INCORPORATING JOINERY LIGHTING

K

Although this video's focus is on the bespoke storage ottoman designed for the project, it shows how beautifully combined uplights and LED lights can enhance the objects and create a beautiful, designer look in the space.



INCORPORATING JOINERY LIGHTING

K

Here's a photo of the same joinery. We remodeled most of the house, have a look [here](#).



INCORPORATING JOINERY LIGHTING

K

This purpose built circular bookcase wouldn't be the same without the concealed LED tape in front of it. Do you remember the rule of thumb? What's the distance you should place the LED at the front?



TRANSFORMING YOUR KITCHEN WITH LIGHTING

Today's lighting industry offers so many tools to treat a space with light. A combination of treatment is always the ideal solution as this allows you to tailor the lighting to the need of the room.

Kitchen is one of those areas where a lot happens, and definitely without a good combination of recessed, surface-mounted and suspended lights, it might be difficult to perform different tasks and enjoy the space.



In newly built homes and apartments we tend to see a lot of down lights spread evenly especially in open plan kitchens. Needless to say, this is the worst lighting layout you can opt for. When done appropriately, the ceiling appears calm and all falls into place.

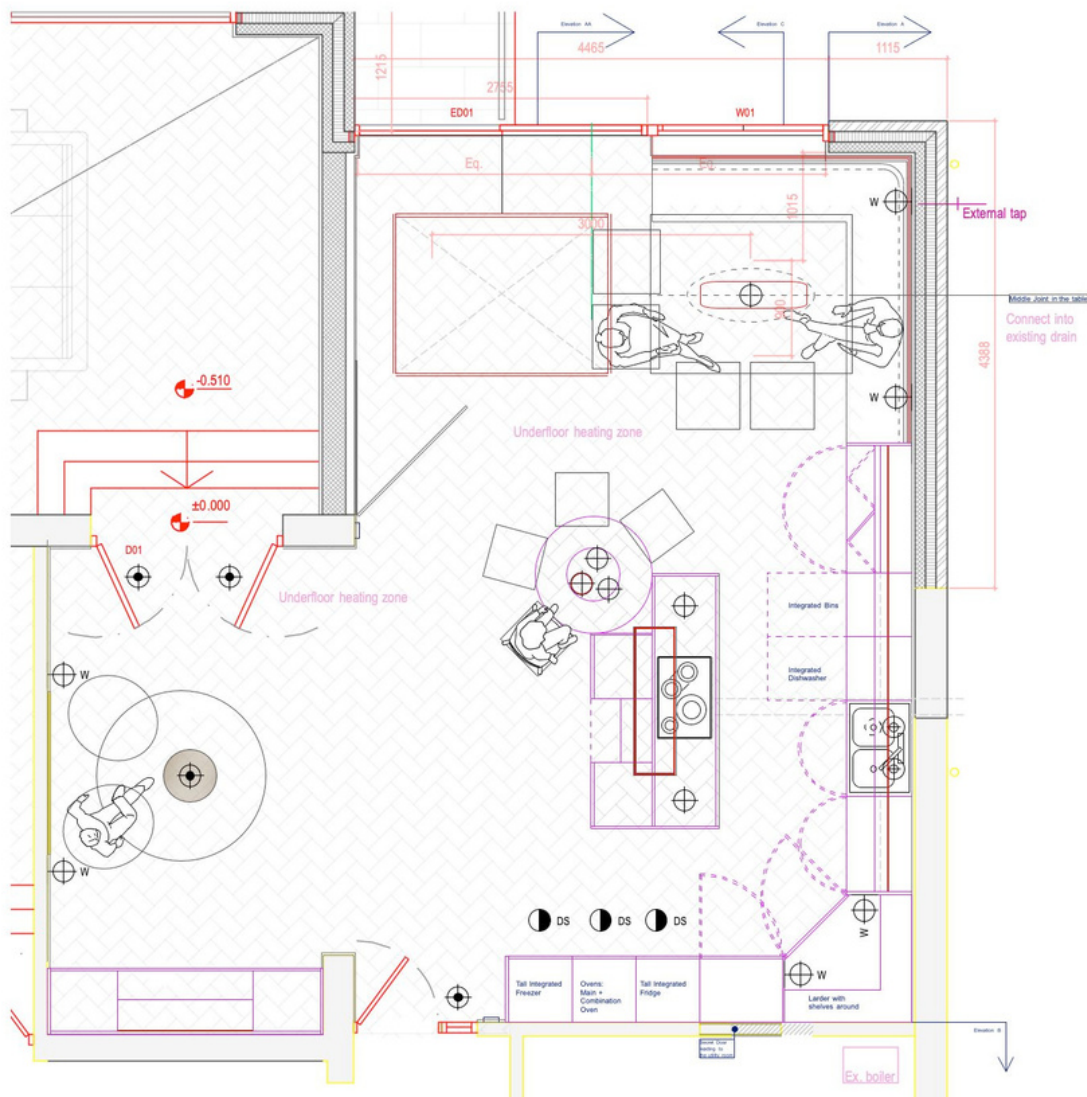
If downlights have to be used, apply the rule 'Less is more'. You should reduce the number of lights by calculating how much light is actually needed. For example, instead of 20 downlights, try to use eight more powerful lights. If you are renovating, place downlights only at locations where they are necessary rather than simply applying a grid.

TRANSFORMING YOUR KITCHEN WITH LIGHTING

How to do it?

Look at the entire space and try to establish relationships between light groups and architectural elements like columns, windows and partition walls. Arrange lights around these architectural elements and they will suddenly become part of the space rather than an imposed template.

Let's have a look at this lighting layout.



TRANSFORMING YOUR KITCHEN WITH LIGHTING

And that's the result



Notice we have used only 4 recessed downlights, 3 by the doors so we didn't create 'dark' areas and had an evenly lit space; we have used 3 directional spotlights to provide light for the oven, fridge and larders area. We proposed a lovely decorative pendant light above the table and 5 other pendants placed strategically above the island and the champagne bar. These indirect lighting pendants rely on the ceiling to bounce the light off and spread it into the space. They create a pleasant diffused light. Remember that the light quality and level will depend very much on the ceiling colour and the distance of the light from the ceiling. These indirect pendants create ambient light spreading it softly all over the space. We also used wall lights which blend into the wallpaper background diffusing the light evenly with little energy consumption.

Discover more about this project [here](#).

TRANSFORMING YOUR KITCHEN WITH LIGHTING

Statistics show that LED lighting inside kitchen cabinets can improve energy efficiency. A report by the U.S. Environmental Protection Agency states that LED lighting consumes significantly less energy, making it a greener choice.

Enhancing your kitchen's lighting layout with LED options is not only energy-efficient but also visually appealing. Consider LED lighting inside your cabinets for a seamless and chic look. To add a touch of luxury to your kitchen, incorporate LEDs into skirting boards.

Here's a beautiful example of using LED lighting inside kitchen cabinets.



How many other lights can you spot in this kitchen zone? There's more on the other side of this space. Scroll to the next page.

TRANSFORMING YOUR KITCHEN WITH LIGHTING



This is a very large kitchen that required a variety of lights in order to enable its users to enjoy performing different tasks and highlight design features, such as the bespoke dining bench.

We've included cabinet concealed LED lighting, for both task and upper cabinetry enhancement, pendant lights above the eating areas, decorative wall lights, a task wall light above the sink, recessed LED strip for the bench and inside the bookcase.

Discover more about this project [here](#).

TRANSFORMING YOUR KITCHEN WITH LIGHTING

In this Scandi Style Kitchen Renovation project, we used a combination of cabinet mounted downlights and more directional pendants that illuminate both the sink and preparation area and the breakfast bar creating a more intimate feeling.



Discover more about this project [here](#).

TRANSFORMING YOUR KITCHEN WITH LIGHTING

Here's more examples of kitchens we designer where we employed all principles of achieving a well balanced lighting scheme that highlighted beautiful designs.



TRANSFORMING YOUR KITCHEN WITH LIGHTING



TRANSFORMING ART WITH LIGHTS

Adequate lighting can accentuate the beauty of your artwork. A study published in the Journal of Environmental Psychology found that proper lighting significantly enhances the perceived aesthetic value of art pieces. So if you own a beautiful piece of artwork, why not make it stand out even more with an equally beautiful picture light?

Picture lights, whether integrated into joinery or mounted above artworks, can instantly elevate the room's atmosphere. When planning your picture lighting, measure your artwork meticulously, considering the length of the picture light in relation to the art frame. A good rule of thumb is to choose a picture light that's about half the width of the picture for portrait paintings and between a third and a half for landscape pieces. Explore high-quality picture lights from renowned brands like Chelsom and Visual Comfort that we use for our projects.



TRANSFORMING ART WITH LIGHTS

In this project, the clients wanted to include a piece of art in the room. One way we could have gone about it is to simply choose a position on the wall and choose an appropriate size picture light, but instead we proposed another creative solution- we designed the joinery in a way that it houses the artwork and included the picture light in the same finish and the ceiling lamp.



Wall-mounted light sources on arms, also known as picture lights, bring light where it needs to be with minimal glare and energy usage. They certainly form a niche in the vast array of light products available.

TRANSFORMING ART WITH LIGHTS

If you'd like to highlight your artwork but you've just moved into a new built or simply don't want to carry out any electrical works, one good solution is to use battery operated picture lights.

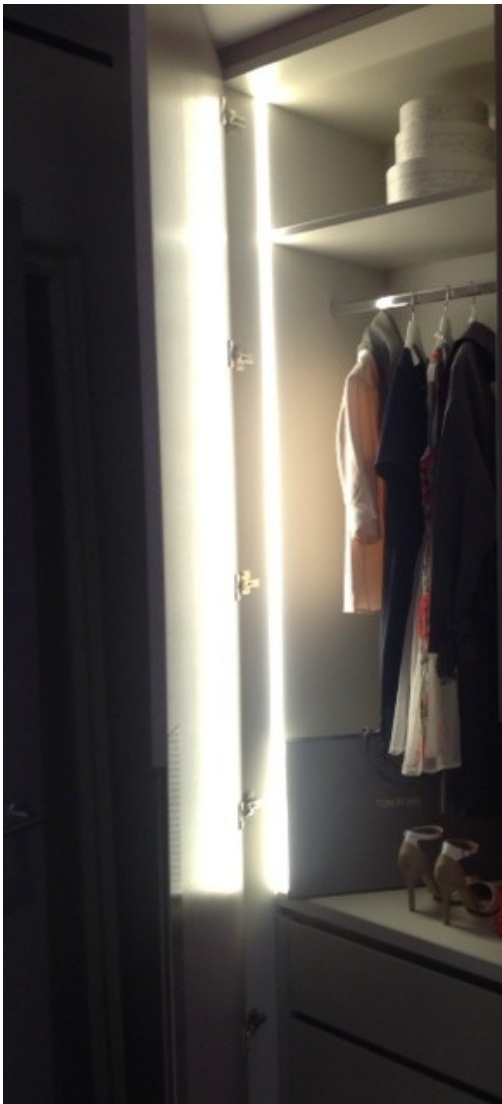


Here's an example of how by using picture lights to specifically illuminate your chosen art pieces, you can create a beautiful atmosphere that brings the piece more attention and appreciation.

TRANSFORMING WARDROBE WITH LED LIGHTS

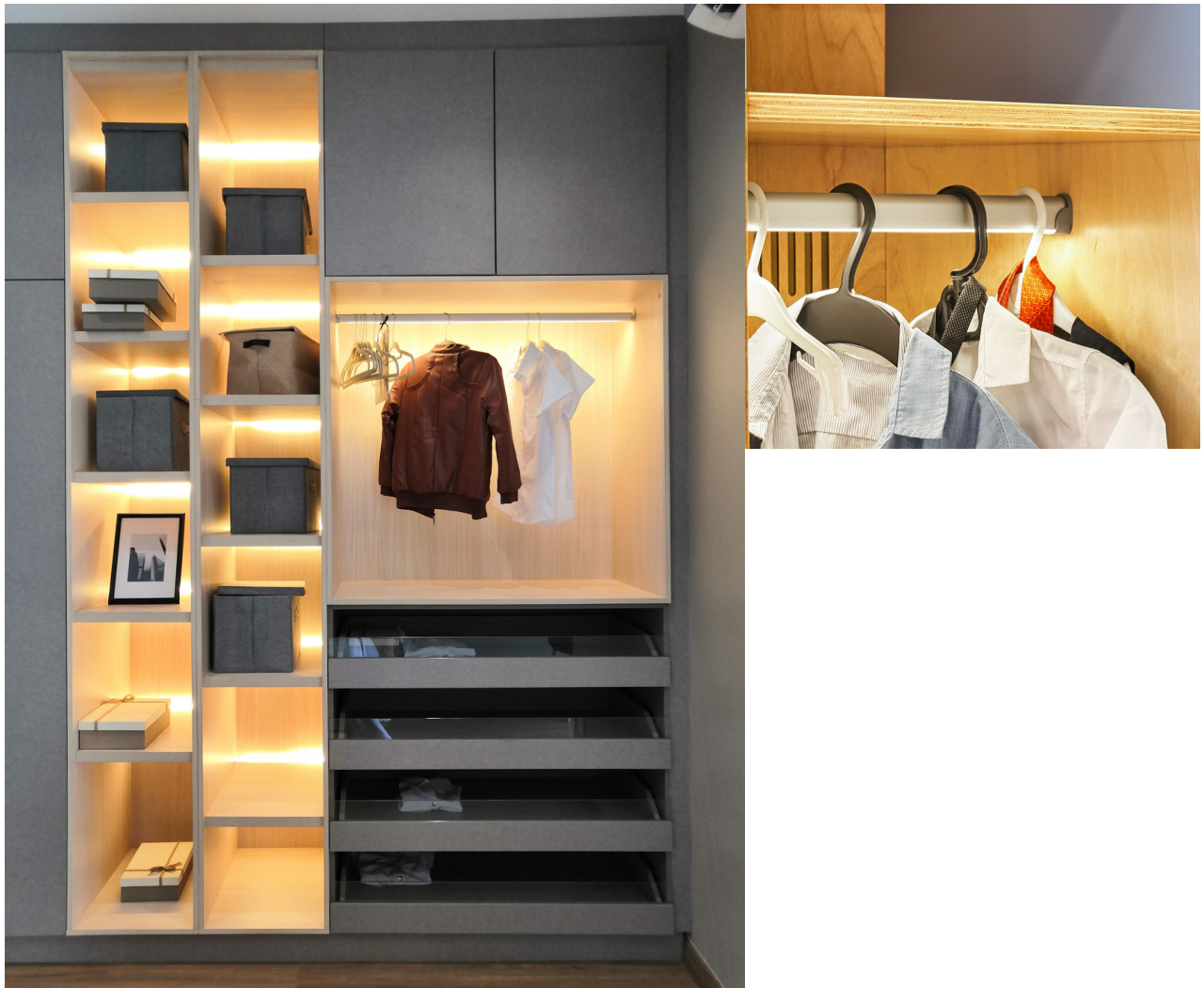
Did you know that well-lit wardrobes make selecting outfits easier and more enjoyable?

According to a survey by Houzz, 68% of homeowners prefer a walk-in closet with integrated lighting. Adding concealed LED lights inside your wardrobe, positioned vertically, not only illuminates your clothing and accessories but also exudes a classy and design-led aesthetic. For those looking to retrofit lighting, battery-operated LED options can be placed on the sides of the wardrobe carcass for practicality.



TRANSFORMING WARDROBE WITH LED LIGHTS

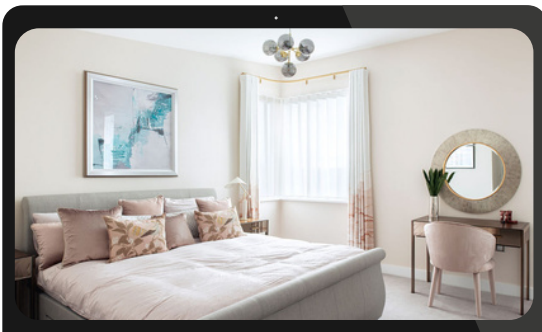
We love specifying wardrobe rail with LED lighting that features a motion sensor which automatically switches the light on when the wardrobe door is opened.



RESOURCES

VIDEOS

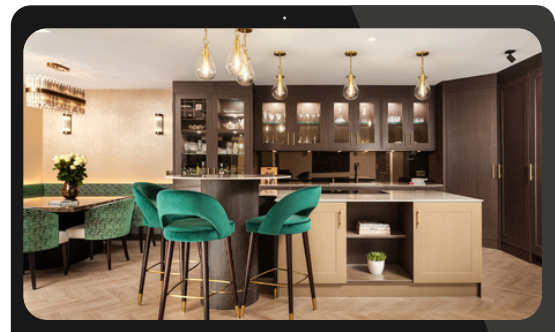
Clients we work with often have similar questions about certain aspects of their projects. To help you we have created a series of short videos to explain different parts of the process and share some of the testimonials.



About our services

Learn what a full Turn-Key service is.

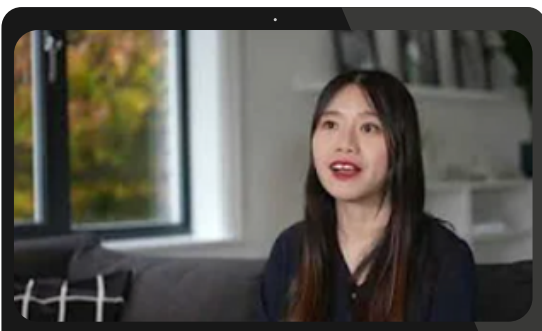
[Click to watch](#)



Luxury Kitchen Renovation

Take a peak at the this stunning kitchen.

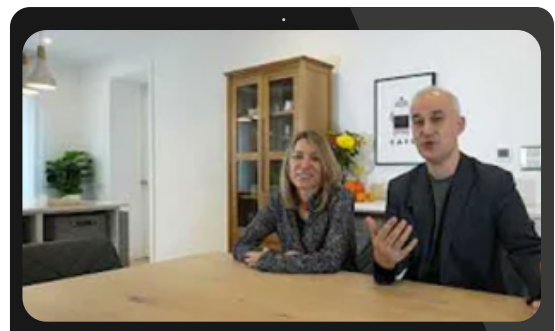
[Click to watch](#)



Testimonial 1

Hear what our client says about our services

[Click to watch](#)



Testimonial 2

Hear what our clients say about their experience working with us.

[Click to watch](#)

NEXT STEPS

Our contact details:



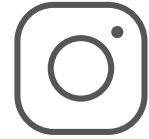
Phone:

(0) 1223 613016



Email:

info@katiemalik.co.uk



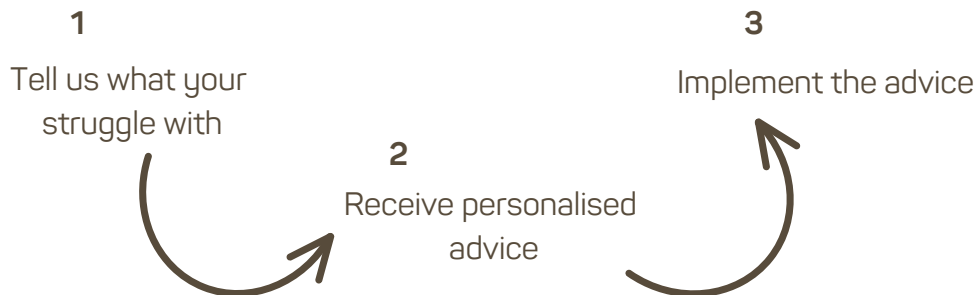
Instagram DMs:

@katie_malik_design_studio

I hope you found this guide helpful and you will soon improve lighting in your home. You will receive a email from me in a few days to see you how you are getting on with your lighting scheme. If you'd like further guidance, you can book a free chat with me using this [link](#).

If you have a pressing question or a challenge you are really struggling with, you can [book a consultation](#) with me.

HOW IT WORKS



BENEFITS

Cost Effective

Save on traditional designer fees still receiving transformed home designs.

Flexible Implementation

Maximise your time by working through the design process from your own home

Expert Designers

Receive a custom design tailored to your need by interior design professionals.